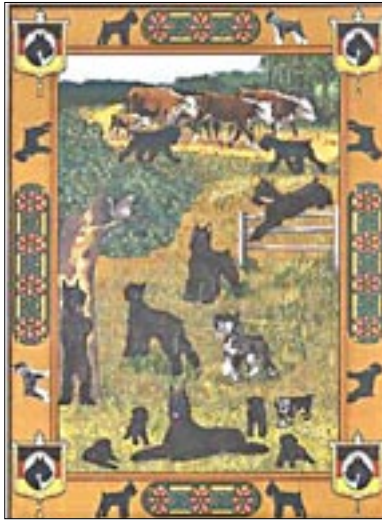
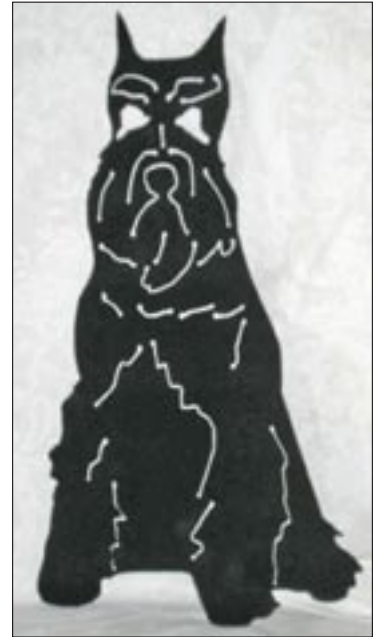




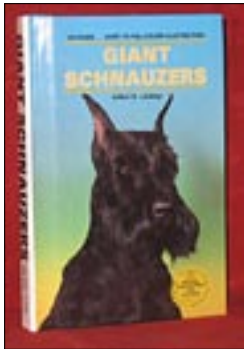
5. English Solid Brass Door Knocker.



1. GS Throw, 50" X 70" 100% cotton



3. Steel Garden Sculpture.



14. GS Book.



20. Black GS and 21. P/S GS children's playset. 21. not pictured.



22. P/S porcelain figurine.



8. Decorative platter, 12" oval.



27. Assorted notecards.



19. SCGSC Business card holder.

## • GIANT RAFFLE •

• OCTOBER 21TH, 2006 •

A wonderful array of lovely, fun, and useful collectibles and wearables that will delight any Giant fancier!

**YOU NEED NOT BE PRESENT TO WIN!**

**PHOTOGRAPHS NOT TO SCALE!**



16. Sterling silver pendant/charm-matches 15.



15. Sterling silver earrings-matches 16.



6. Vintage porcelain dish, 3.5".



12. Stained Glass GS figure, 6"x 5".



25. Leash holder.



11. Diamante brooch, English.



29. GS Pastel Color Print by Betsy Kirk, *Pretty in Pink*, Limited Edition 55/200, 22"x17."



23. German Keyring



13. Russian Nesting Dolls, hand-painted & signed by artist.



18. Gold plated pewter pentant/charm



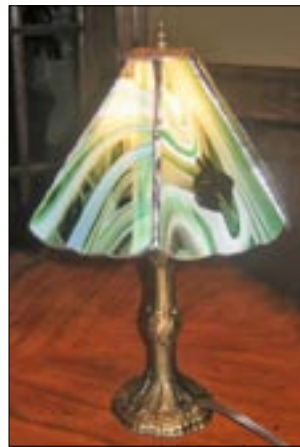
17. GS Pin



28. GS Headstudy Print by John Matson, 9"x12".



10. Salt & Pepper Shakers.



2. GS Tiffany-style lamp. 13" tall.



9. Hand-painted ceramic box.



26. Cherry box with wood inlay.



7. Original oil painting, "Come Sit With Me," 11x14



4. Size XL yellow sweatshirt.



24. Cloth patch from Germany.



30. Gary McGirr Print, *Under the Arbor*, 85."x11".

# GIANT RAFFLE RULES

## YOU NEED NOT BE PRESENT TO WIN!

1. 50 Raffle tickets will be enclosed with your newsletter. If you need more (and we hope you do) contact Jane Chism at: 214-547-9250; E-mail: jchism456@aol.com
2. Tickets Cost: \$2 each; 7 for \$10; 15 for \$20; 20 tickets for \$25; 35 tickets for \$43; 50 tickets for \$60.
3. There will be a separate drawing for each item. So write the number of the item you want on the ticket with your name, phone number and/or e-mail address. If you don't write the numbers on the stubs, the tickets will be distributed across all the items. Make sure you write your name and phone number or e-mail address on the backs of all stubs!
4. Send your money via check or money order made out to SCGS Club, and ticket stubs to Jane Chism, 1502 Summerside Drive, Allen, TX 75002.
5. Tickets will be sorted into the appropriate "basket" for each item and will be drawn following the Giant Halloween Parade at the Giant Fall Gathering!
6. If you win and are not present, your prize will be mailed Priority.

## NUMBERED RAFFLE ITEMS      PHOTOS ON REVERSE SIDE

- |                                                                                     |                                                                                                   |
|-------------------------------------------------------------------------------------|---------------------------------------------------------------------------------------------------|
| 1. GS Throw, 50" X 70" 100% cotton.                                                 | 20. GS (black) Children's play set.                                                               |
| 2. GS Tiffany-style lamp, 13" tall.                                                 | 21. GS (p/s) Children's play set. (not pictured)                                                  |
| 3. GS Steel Garden Sculpture.                                                       | 22. GS p/s porcelain figurine.                                                                    |
| 4. GS Sweatshirt - Size XL.                                                         | 23. GS keyring, reversible, from Germany.                                                         |
| 5. GS Solid Brass Door Knocker, from England.                                       | 24. GS cloth patch, from Germany.                                                                 |
| 6. GS Vintage porcelain dish, 3 1/2" dia..                                          | 25. GS leash holder.                                                                              |
| 7. GS original oil painting "Come Sit With Me", 11X14.                              | 26. GS cherry wood box w/ wood inlay.                                                             |
| 8. GS decorative platter, approx. 12" oval.                                         | 27. GS note cards (assorted).                                                                     |
| 9. GS hand-painted ceramic box, 6" X 3".                                            | 28. GS Headstudy Print by John Matson, 9"x12".                                                    |
| 10. GS salt & pepper shakers.                                                       | 29. GS Pastel Color Print by Betsy Kirk, <i>Pretty in Pink</i> , Limited Edition 55/200, 22"x17". |
| 11. GS Diamante brooch, hand-crafted in England.                                    | 30. GS Gary McGirr Print, <i>Under the Arbor</i> , 8.5"x11".                                      |
| 12. GS stained glass figure, 6" X 5".                                               |                                                                                                   |
| 13. GS Russian Nesting Dolls, hand-painted in Central Russia, signed by the artist. |                                                                                                   |
| 14. Book. Author S. Lockley. 192 page hardback with 175 photos and drawings.        |                                                                                                   |
| 15. GS sterling silver earrings (matches #16).                                      |                                                                                                   |
| 16. GS sterling silver pendant/charm (matches #15).                                 |                                                                                                   |
| 17. GS pin.                                                                         |                                                                                                   |
| 18. GS gold-plated pewter pendant/charm.                                            |                                                                                                   |
| 19. GS SCGSC business card holder.                                                  |                                                                                                   |

## GIANT SPECIAL DRAWING

A few, very special items (too large or too fragile to be mailed) will be raffled or auctioned off at the Giant Fall Gathering. Sorry but you will have to be present to win!

**THIS IS A SOUTH CENTRAL GIANT SCHNAUZER CLUB FUND-RAISER!**  
**PLEASE BE GENEROUS!**